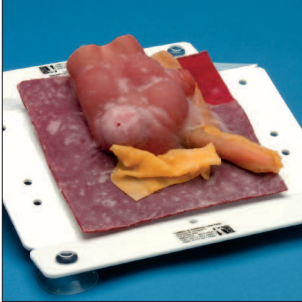


Attaching to Variable Slope Jig

1



1

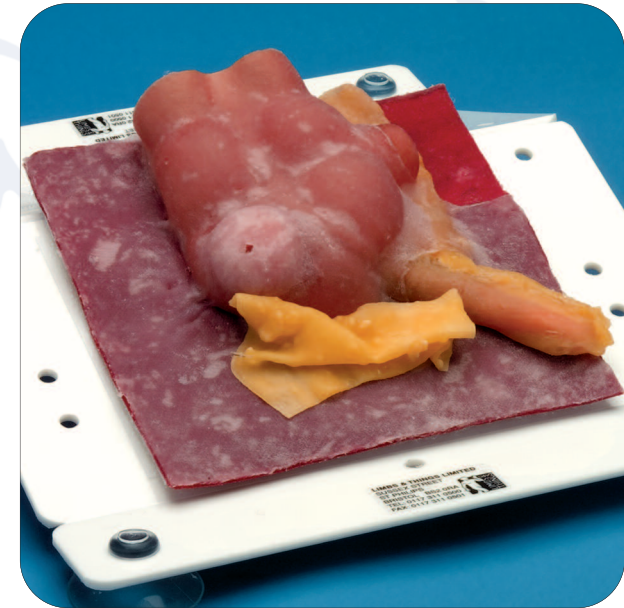


The Variable Slope Jig is part of the Soft Tissue Retaining Set. The Set is supplied with the MATT Trainer - Basic and MATT Trainer - Standard.

The Vermiform Appendix should be attached to the Variable Slope Jig for use.

The Jig can then be placed in the MATT Trainer for the correct laparoscopic training environment. (Surgical Dissection Pad shown).

Vermiform Appendix User Guide



Designed and manufactured by Limbs & Things Ltd,
Sussex Street, St. Philips, Bristol, BS2 0RA, UK.
Telephone: +44 (0)117 311 0500 Fax: +44 (0)117 311 0501
sales@limbsandthings.com www.limbsandthings.com

Issue 1, February 2006
© 2006 Limbs & Things

Vermiform Appendix

A series of three models representing the different locations in which the vermiform appendix is to be found. Trainees will move on from the Surgical Dissection Pads (Part Nos: **50114/50118**) to this progressive 3 stage appendices suite:

- Normal represents 32% of locations
- Post-ileal represents 1% of locations
- Retrocaecal represents 64% of locations

All models are designed for the laparoscopic removal of the appendix and have an additional feature; presentation of a simulated peptic ulcer for closure using peritoneum and mesentery.

Skills

- Repair and closure of peptic ulcer
- Excision and division of peritoneum
- Identification and exposure of appendix
- Mobilisation and division of vessels
- Removal of appendix
- Inspection of stump of appendix

Features

- Highly realistic model of appendix, caecum, and ileum stump presented anatomically
- The variations available in the range of appendices provide increased levels of difficulty
- Convincing fluid filled vessels, caecum contents, and tissues encouraging sensitive and skillful handling of tissue
- Vessel features a luer lock to facilitate further fluid supply
- Incorporates a luer lock to which the Mock Blood Giving Set (Part No: **60651**) may be attached to provide fluid flow for the appendicular artery. Use Mock Blood - Arterial (Part No: **60653**)
- Use with Soft Tissue Retaining Set (Part No: **50151**), MATT Trainer - Basic (Part No: **50250**) and MATT Trainer - Standard (Part No: **50150**)

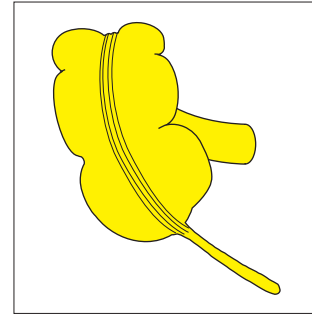
Care of the product

- Store in the airtight bag provided
- Store away from excessive heat and direct sunlight

Health & Safety

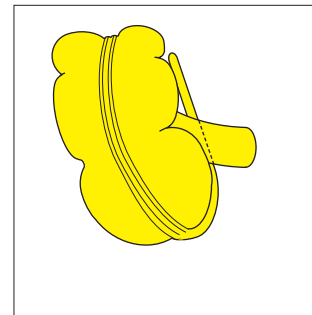
- Contains latex
- Wear surgical gloves when using the product
- Contains fluid which may cause irritation to the skin after prolonged contact. If this occurs, wash off with plenty of water
- Do not ingest the product and practice normal hygiene after handling the product

Variations



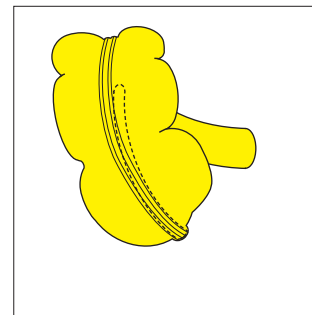
Vermiform Appendix - Normal Anatomy

Part No: **50122**



Vermiform Appendix - Post-ileal

Part No: **50123**



Vermiform Appendix - Retrocaecal

Part No: **50124**