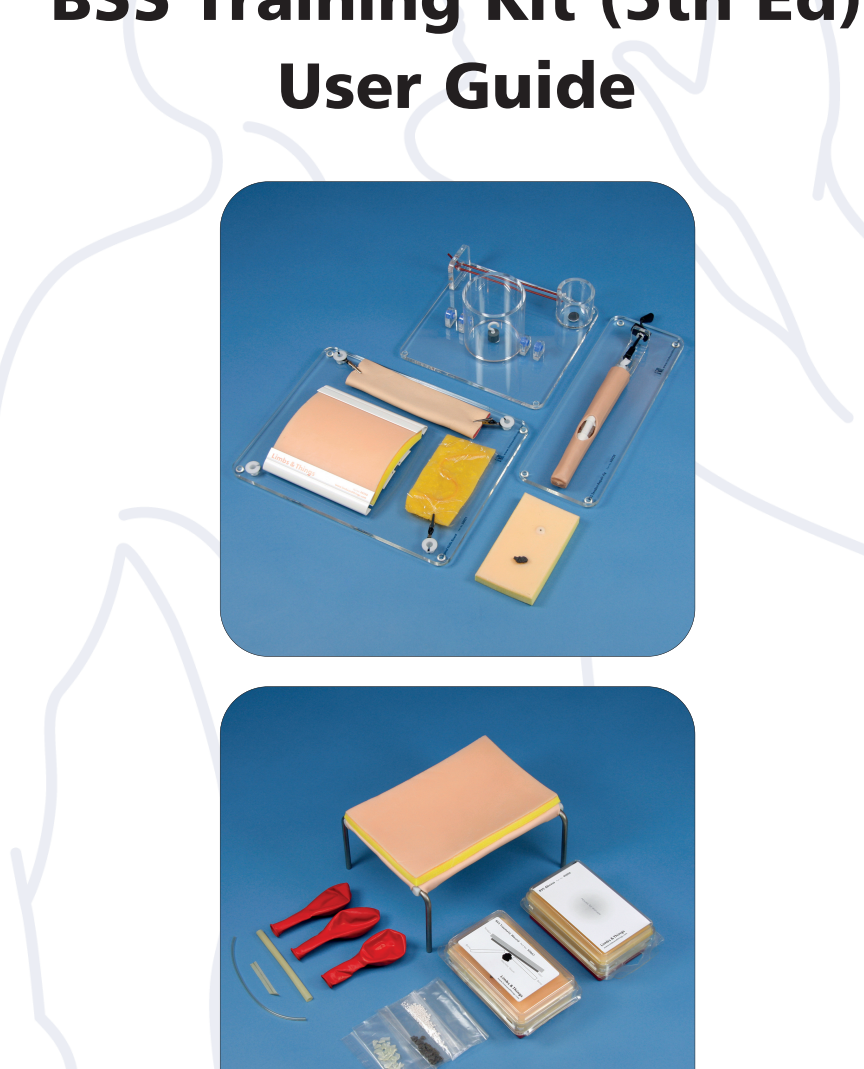
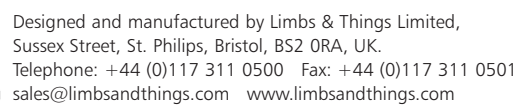


BSS Training Kit (5th Ed) User Guide



For more Basic Surgical Skills training products visit
www.limbsandthings.com



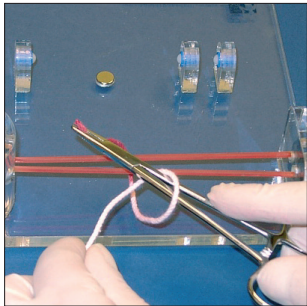
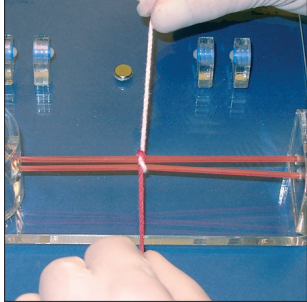
Issue 1, February 2013
© 2013 Limbs & Things

www.limbsandthings.com

Using the BSS Knot Tying Trainer - examples

Notes

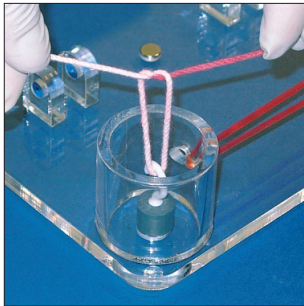
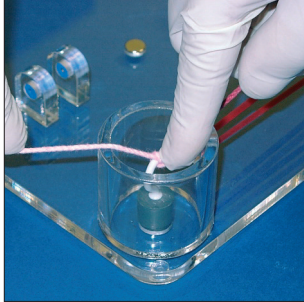
1



Hand tie and instrument tie jig.

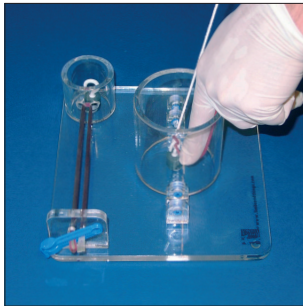
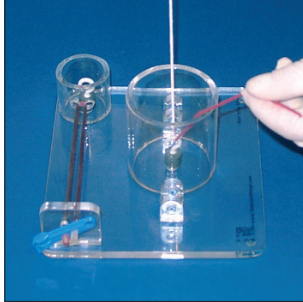
Dependent upon the technique being taught, the Suture Cords can be cut to the appropriate length (eg one third red to two thirds white).

2



Tying at depth: shallow fixed cylinder.

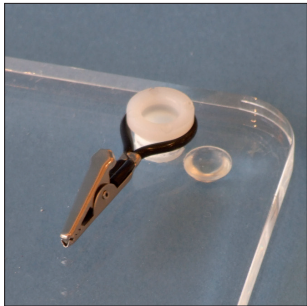
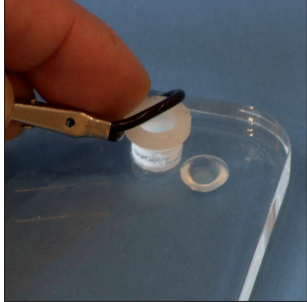
3



Tying at depth: large removable cylinder.

Setting up Vein Patch Graft

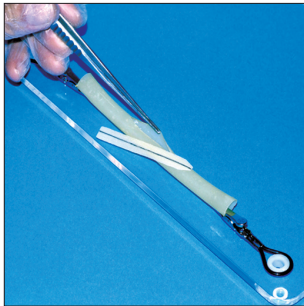
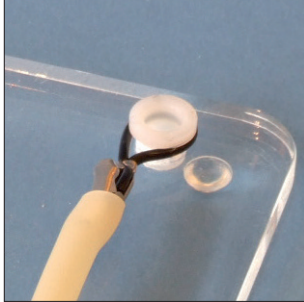
1



Attach the Retaining Clips to the Skills Board by looping them over the white plastic lugs.

Attach the Clips to the short side of the Board.

2

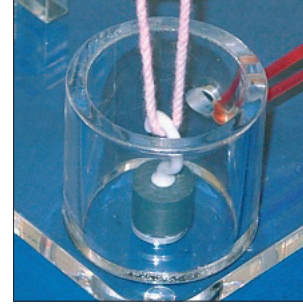


Attach the clips to either end of the artery.

The artery is now ready to use.

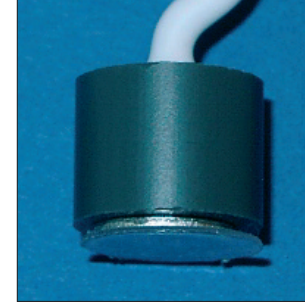
Tension Hooks

A



This Tension Hook is to be used in the small fixed cylinder.

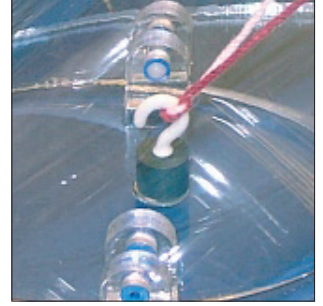
B



This Tension Hook can be used in either of the cylinders.

The thin plastic shim on the base reduces the amount of force required to pull the Hook free from the magnet.

C

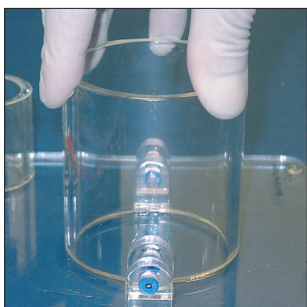


This Tension Hook can be used in the centre of either of the cylinders.

The thicker plastic shim on the base further reduces the amount of force required to pull the Hook free from the magnet.

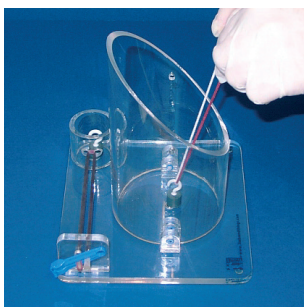
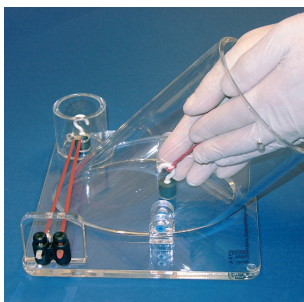
This represents more delicate tissue which is easily damaged through the use of excessive force during a procedure.

Removable cylinder



Engage the dimple on one side of the cylinder into a spring ball clip on the base.

Rotate the cylinder until the dimple in the other side clicks into position.



A large angled cylinder (not supplied) is available for purchase separately. This upgrade allows for tying at greater depth and large aperture abdominal & pelvic tying.

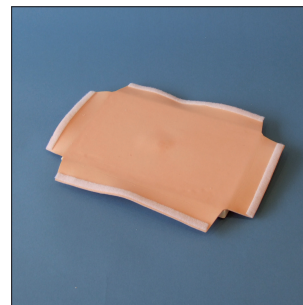
To order: ring Limbs & Things on 0117 311 0513 and quote 'Large Knot Tying Cylinder'.

Cleaning

The BSS Knot Tying Trainer should be cleaned with a glass cleaner spray (Mr. Muscle) applied using a soft cloth. Polish the surface clean with a soft dry cloth.

Replacing the AOCT pad

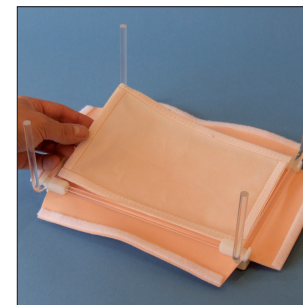
1



Place the AOCT Pad upside down on the work surface, as shown.

Place the Support Frame upside down on the Pad.

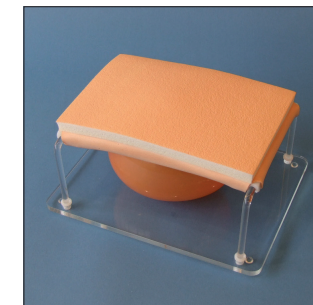
2



Place the Peritoneum centrally within the Frame.

Now secure the Peritoneum and Pad to the Frame by folding over the four flaps.

3

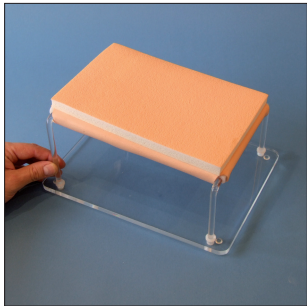


The Pad and Frame can be attached to the Skills Board.

Note: the Support Frame frame is now made from metal

Setting up the BSS AOCT

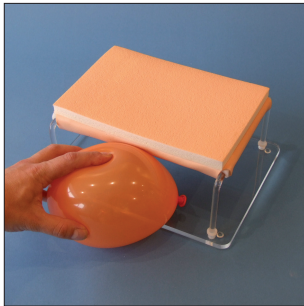
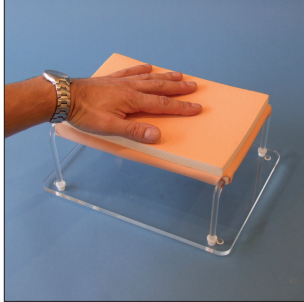
1



Remove all Day 1 products from the Skills Board.

Fold down the legs of the Support Frame and insert them into the white plastic lugs as shown.

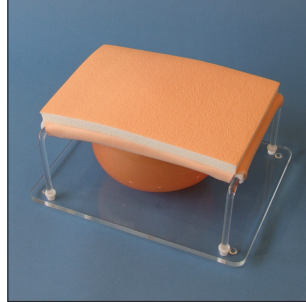
2



Push down on the Pad to ensure the legs are fully engaged.

Inflate the supplied balloon and push underneath the Frame. Maximum diameter for the balloon should be 110mm.

3

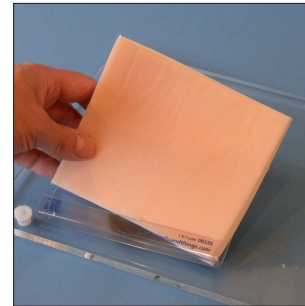


The product is now ready to use.

Note: the Support Frame is now made from metal

Setting up for Suturing Techniques

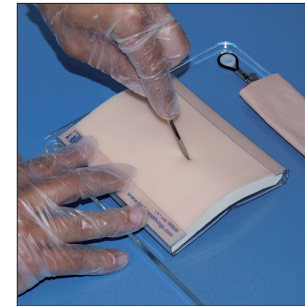
1



Attach the Skin Pad Jig base to the Surgical Skills Board. Make sure the suction feet are firmly attached to the Board.

Insert one side of the Skin Pad (BSS Lesion & Cyst) into the Jig.

2



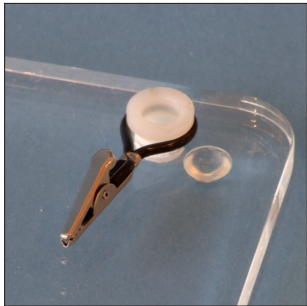
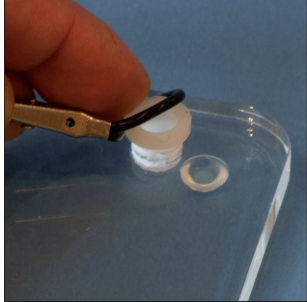
Now insert the other side of the Skin Pad and push down to ensure a secure fit.

The Skin Pad is now ready to use.

Note: the design of the Skin Pad Jig has been improved

Setting up for Haemostasis

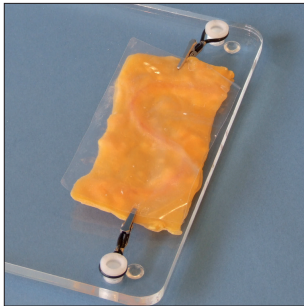
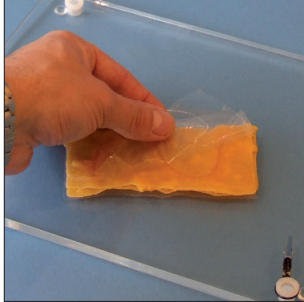
1



Attach the Retaining Clips to the Skills Board by looping them over the white plastic lugs.

Attach the Clips to the short side of the Board.

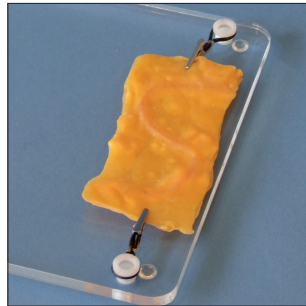
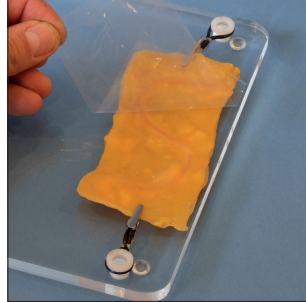
2



Peel the plastic backing sheet off one side of the Haemostasis Pad.

Turn the Pad over and clip it in position on the Board.

3

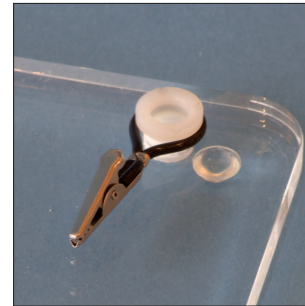
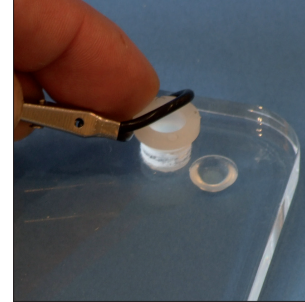


Remove the other plastic backing sheet.

The Pad is now ready to use.

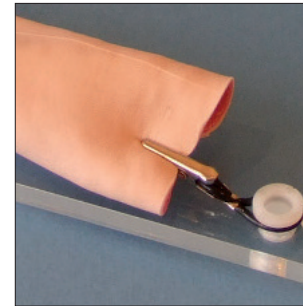
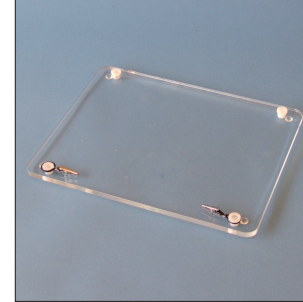
Setting up for Tissue Handling - Bowel

1



Attach the Retaining Clips to the Skills Board by looping them over the white plastic lugs.

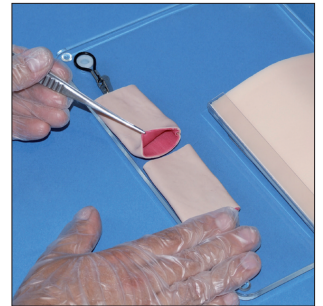
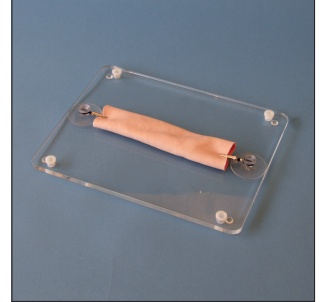
2



Attach the Clips to the long side of the Board.

Secure the Bowel as shown.

3



Alternatively, the Retaining Clips with sucker feet can be used to hold the Bowel as shown.

The Bowel is now ready to use.