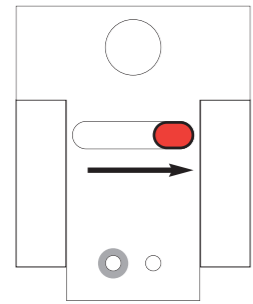
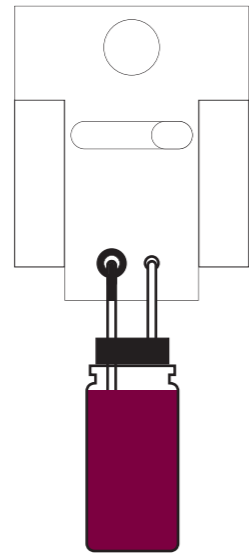


AV ARM QUICK SETUP: Filling the fluid unit



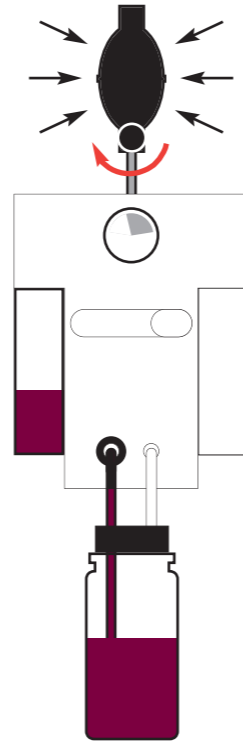
1

Slide the reservoir selector to the right.



2

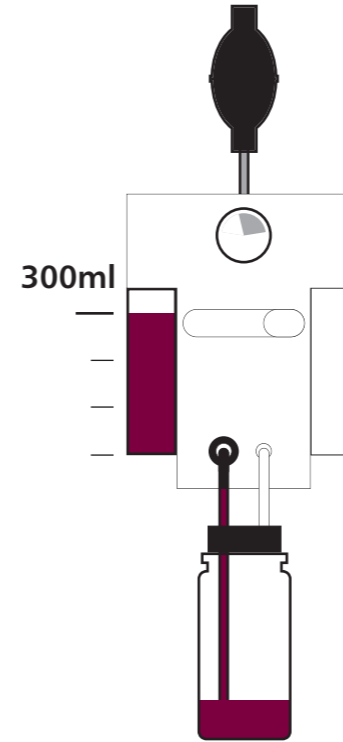
Attach the refill bottle: black connector to the black socket on the left.



3

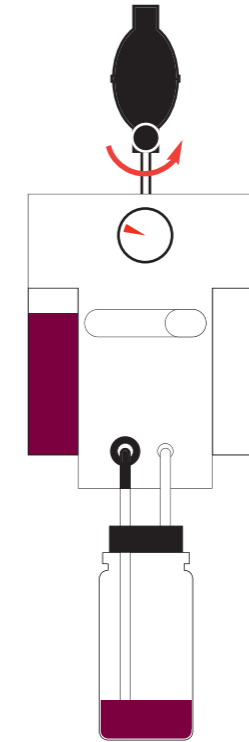
Close the pressure valve by turning it clockwise.

Squeeze the bulb to pressurise the fluid system into the grey zone.



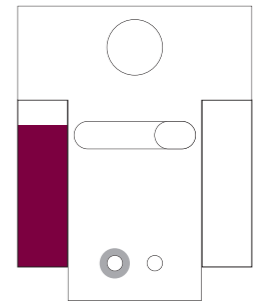
4

Fill up to 300ml.



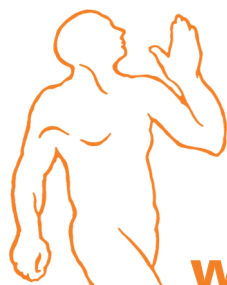
5

Release the pressure by turning the pressure valve anticlockwise.

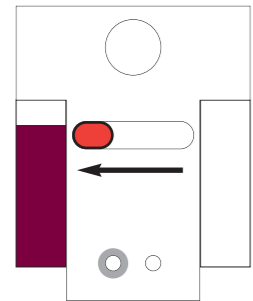


6

Disconnect the refill bottle.

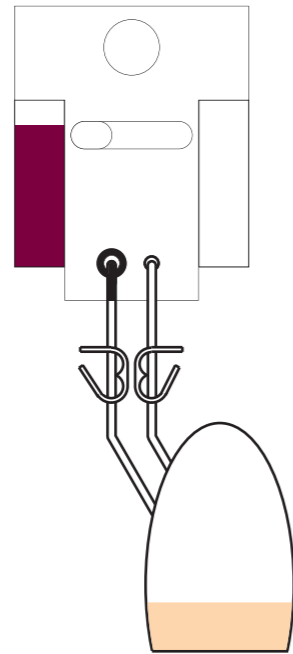


AV ARM QUICK SETUP: Priming the veins



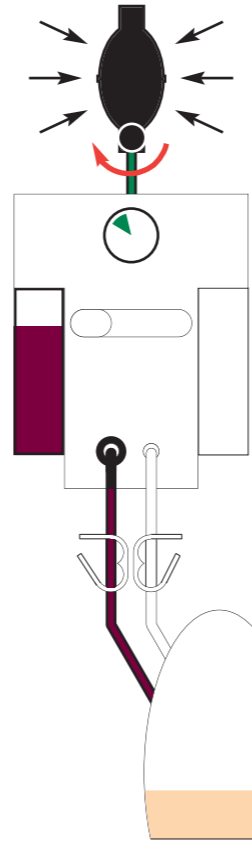
7

Slide the reservoir selector to the left.



8

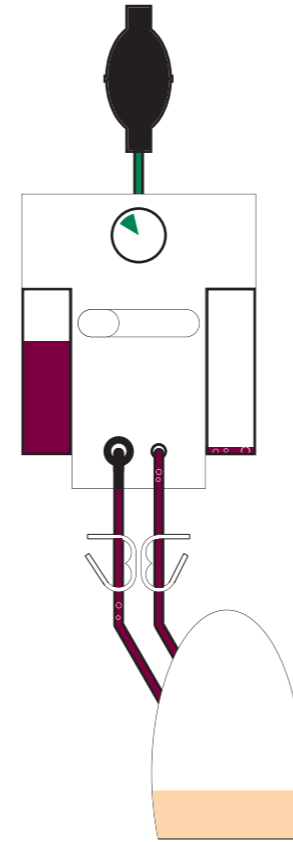
Attach the arm:
black connector to the
black socket on left.



9

Close the pressure valve by
turning it clockwise.

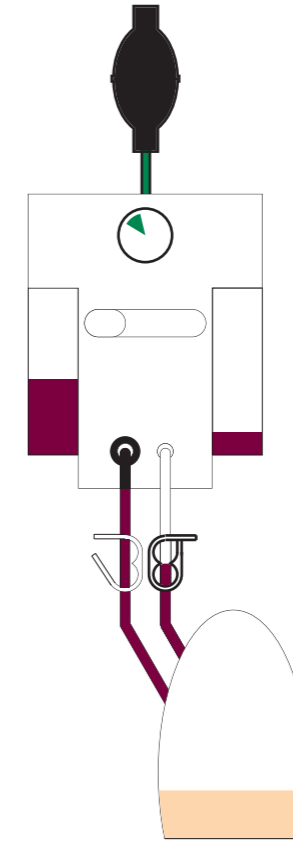
Squeeze the bulb to pressurise
the fluid system into the green
zone.



10

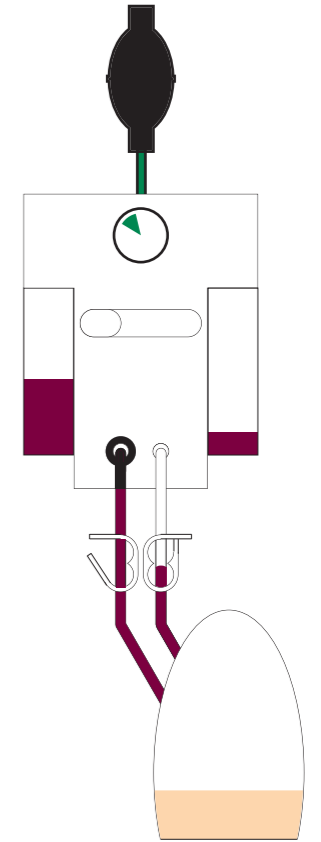
Blood flows from the left
reservoir, circulates through
the arm and collects in the
right reservoir.

There are air bubbles in the
blood.



11

When there are no more air
bubbles in the blood, close the
white clip on the right tube.



12

The arm is ready to use.

